

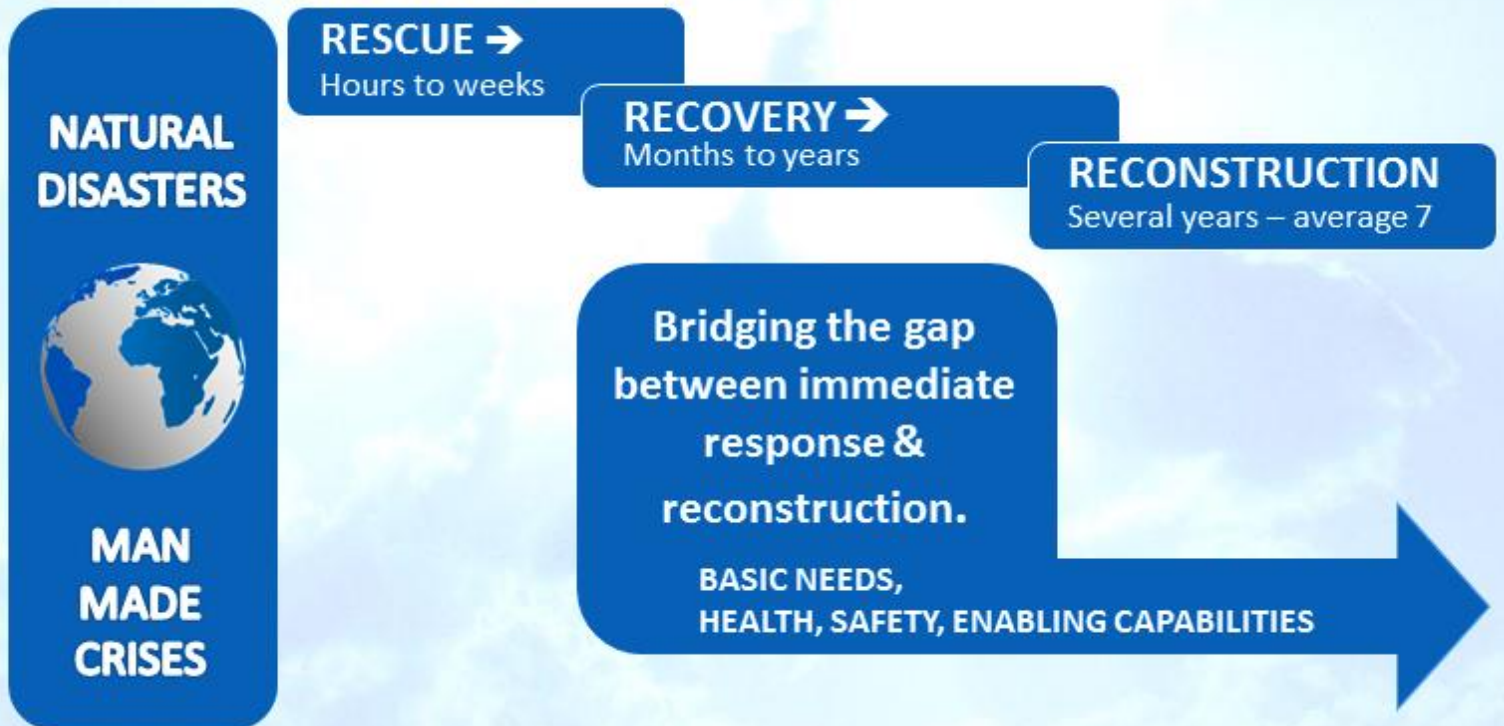
RCM® Emergency Solutions

Catalogue

December 2018

ResCamp Modules

Fostering Recovery



CONTACT:

CEO Gustav Oller
+358 40 5065302
gustav.oller@comprendum.com

Erkki Pekonen
erkki.pekonen@comprendum.com

ADDRESS:

Langansbolevagen 20
10640 Raasepori
FINLAND

RCM[®] Emergency Solutions – Catalogue

14.12.2018

INTRODUCTION

Comprendum Ltd is a Finnish company with the mission to provide assistance and help by offering, together with our partners and other actors, best possible new and innovative comprehensive solutions to support rescue, recovery, resilience, reconciliation and reconstruction in crisis, disaster and developing areas. We also provide related research, analysis, assessment, training and other services as needed.

We develop and provide new models, concepts and solutions and ensure interoperability, modularity, scalability and flexibility using integrated innovations. Our global network of experts have needed special experience, expertise and knowledge.



ResCamp Modules[®]

- Provides camp and infrastructure solutions to support crisis management, disaster relief and humanitarian assistance
- Uses sustainable, modern technology for shelter, housing, energy, water, sanitation, catering, waste management, medical aid, protection and security, communication, transportation and information collection and management.
- Tailor made solutions are also usable for upgrading existing infrastructures and camps.
- Designs solutions together with the customer to meet all needs and requirements.
- Uses newest COTS innovations which has been tested and proven to function.

"From Stand-alone Ideas to Comprehensive Solutions"

RCM® Emergency Solutions – Catalogue

Comprehensive solutions currently under development are:

- RCM® MiniWASH
 - Portable, Deployable Water, Sanitation and Hygiene solution
- RCM® Protect
 - Integrated Camp and Site early warning, threat detection and protection solution
- RCM® Health
 - Mobile/Deployable Health Stations, Field Hospitals and Secondary Care solutions
- RCM® WaterTreat
 - Waste water treatment solutions for crisis management operation camps
- RCM® Pop-Up PrimarySchool
 - Training and School facilities for emergency needs
- RCM® RescueBase Mini
 - Tailored to needs of base infra and aid personnel in a few containers
- RCM® MobileWater
 - Mobile Water purification solution for remote areas

ResCamp Modules® – RCM® Emergency Solutions Catalogue

We are keeping this catalogue updated on availability of critical items that may be needed in emergency for disaster relief, humanitarian assistance and crisis management situations.

As we are continuously looking for new innovative solutions being developed the catalogue is developed together with our co-operation partners and suppliers. We appreciate all information from users in the field of their needs in order for us to develop and look for solutions to be even better suited for the needs at hand. Do not hesitate to contact us and ask also for solutions that are not shown in this catalogue. We will explore the possibilities to fulfil your specific needs. We may have something under development already.

As most of the solutions and items are produced or assembled in Finland the lead times can be kept relatively short. The products can be shipped by air from Finland within 2-7 days for example to Amman airfield in Jordan. The shipping costs are in average 10% of the total product costs.

We are also working to make available a special RCM® Emergence MiniPack that would include water purification and handling, catering, camp lighting, solar power and sheltering solutions. These solutions with somewhat shorter lead times could be air delivered in packages that fits in standard 20 feet sea containers or packed in airfreight containers. If interested please tell your needs and requirement and ask for proposals.

“From Stand-alone Ideas to Comprehensive Solutions”

RCM® Emergency Solutions – Catalogue

Our special package, RCM® MiniWASH is intended for rescue and aid workers to support their needs of clean water, sanitation and hygiene. All single components of the package that can be designed for the needs from tens to one hundred people weighs less than 23 kg and are fully air transportable even in commercial flights as luggage. This package is originally designed to fulfil the needs of UNHCR.



You will find detailed information on the products and solutions, including pictures, measurements and our lead times for delivery on the following pages of this catalogue.

Best Regards
Gustav Öller
CEO

RCM® Emergency Solutions – Catalogue

List of our currently available RCM® Emergency Solutions:

WATER PURIFICATION & MANAGEMENT SOLUTIONS – pages 8-9 for delivery times & 17-21 for detailed information

- [Purification unit, UV, Solar UV Mobile](#), (1000 L/hour = 15-20 m3/day), incl carry box, 12 kg
- Spare parts kit for regular maintenance (UV-unit, includes spare UV-lamp)
- [Purification unit, RO, SolaRO Mini 50](#) (25-50 L/h = 0,6-1,2 m3/day), incl box 18 kg
- System pack for SolaRO Mini 50 (watertank 60l, prefilter, UV protected pipes etc.)
- [Purification unit, RO, SolaRO Mini 150](#) (60-150 L/h = 1,2-3 m3/day), 28 kg
- System pack for SolaRO Mini 150 (watertank 200l, delivery pump, prefilter)
- [Purification unit, RO, SolaRO PRO 300 BW](#) (220-300 L/h = 5-7 m3/day), 45 kg
- [Purification unit, RO, SolaRO PRO 450 Emergency](#) (300 L/h=7m3/day), Modular 3x30kg
- Spare parts kit for regular maintenance (RO-unit)
- [BackWash system for turbid water](#)
- [Solar panel kit for SolaRO Mini 50, Mini 150 & SolarUV](#)
- [Water pumping, storage and distribution pack](#) (incl. bladder tanks & water tap station)
- [Water tap station, foldable](#), with 6 self-closing taps
- [Foldable water tanks](#) in different sizes (0,5-3 m3)
- [Foldable liquid transport bladder](#) 10 m3

POWER SOLUTIONS – pages 10-12 for delivery times and 22-30 for detailed information

- [Foldable Solar Panel](#) 42W, 1 kg
- [Mobile Charger](#) 150W, 2,6 kg
- [Mobile Solar Plant](#) 1000W, 12,6 kg
- [Solar Power Spare kit](#) (cables, 2 x 150W powerbank, 1 x Solar Panel 42W)
- [Energy pack 1500](#), Integrated solar panels, Lead acid gel battery & Inverter 1500 W, 53 kg
- [Solar power set, PS4020](#), 4000 W Inverter, Li-on battery, 4 PV soft solar panels – 62 kg
- [Sun tracking PV-2M Solar panel station](#), 158 kg, 600Wp
- [PV-2 Solar tracking framework](#), 121 kg, for 2 panels max 1200x2100 mm
- [Sun Tracking TC1000 Solar Thermal Collector](#), 164 kg, Heats 150 L of water 50°C /sunny day

LIGHTING SYSTEMS – pages 12 for delivery times and 30 for detailed information

- [Camp lighting, Baselight 420X](#) (50000 LM, 420W, 4,5m high, IP67, dimmable 15W) - 30 kg
- [Camp and worklight set](#), Mberg led 48V + Batterybacked emergency light system

“From Stand-alone Ideas to Comprehensive Solutions”

RCM® Emergency Solutions – Catalogue

SHELTERS – pages 13-14 for delivery times and 31-33 for detailed information

- [QuickSpace Basic](#), light containers á 11,7 m2 – 650 kg
- [QuickSpace Combi](#), light containers á 11,7 m2 -650 kg, to build bigger spaces up to 46m2
- [S-Mod60 Shelter](#), multipurpose, aluminium beam, slidetech 60m2 (6x10meter), 650 kg
- [S-Mod60, Soft floor](#) to shelter 6x 10 meter
- [S-Mod60, Floor isolation](#) to shelter 6x10 meter
- [S-Mod60, Inner isolation](#) to shelter 6x10 meter, heavy
- [S-Mod60, Inner isolation](#) to shelter 6x10 meter, light
- [Technical Reflective Shade Screen](#) Solaro 6125 O E AW for ISO 20 feet containers

SANITATION & DESINFECTION SOLUTIONS – pages 14-16 for delivery times and 34-40 for detailed information

- [Field shower](#) MAVA, light portable, water-saving, with cabin tent 22 + 22 kg
- [Field Latrine Cabin tent](#) 22 kg
- [MAVA Water heater](#), 74 kg
- [Field latrine Green toilet](#) 120 + MAVA cabin 22 + 12 + 22 kg
- [Green Toilet 120 composting dry toilet](#) and sanitation system 22 + 12 kg
- [Portable quick decontamination system Cleanix](#) (hydro peroxide, transport box included)
- [Hand sanitizing foam 500 ml](#) (alcohol free), 1 euro pallet (864 bottles)
- [Hand sanitizing foam 12x500 ml](#) (alcohol free)
- [Hand sanitizing foam 50 ml](#) (alcohol free), 1 euro pallet (4860 bottles)

COOKING SOLUTIONS – pages 16 for delivery times and 41-43for detailed information

- [Field Cooker FC 30](#) – for wood and with LPG burner – 45 kg
- [Frying pan for FC 30](#)
- [Field Cooker FC 75](#), for wood and with LPG or diesel burner – 83 kg
- [Light Field Kitchen LFK 150](#), for wood and with LPG or diesel burner – 360 kg

ResCamp  Modules®
Fostering Recovery

“From Stand-alone Ideas to Comprehensive Solutions”

WATER PURIFICATION & MANAGEMENT

Water purification unit Solar UV Mobile



SOLAR WATER
SOLUTIONS

LEAD TIME FOR DELIVERY
6 weeks FCA Helsinki

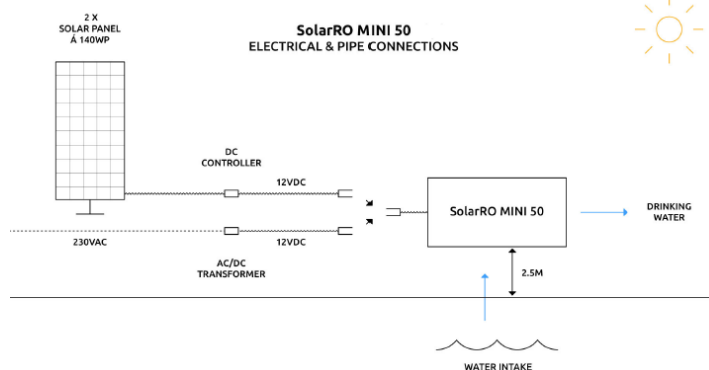
For technical details see page 17

Water purification unit SolaRO Mini 50



LEAD TIME FOR DELIVERY
6 weeks FCA Helsinki

For technical details see page 18



Water purification unit SolaRO Mini 150



LEAD TIME FOR DELIVERY
6 weeks FCA Helsinki

For technical details see page 19

"From Stand-alone Ideas to Comprehensive Solutions"

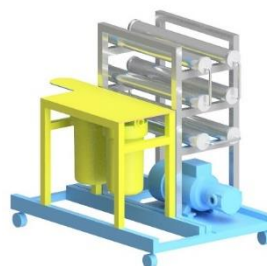
RCM® Emergency Solutions – Catalogue

Water purification unit SolaRO PRO 450 Emergency (300 L/h=7m3/day) – Modular 3x30 kg

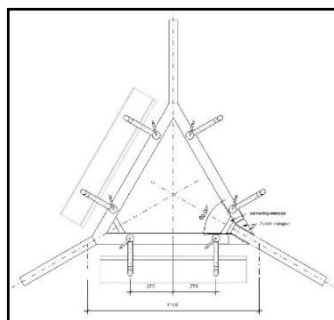
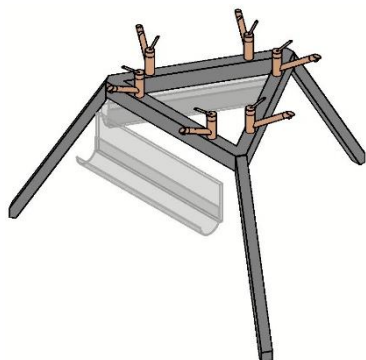


LEAD TIME FOR DELIVERY
6 weeks FCA Helsinki

For technical details see page 21



Water tap station, foldable, 6 self-closing taps



ASK FOR LEAD TIME FOR DELIVERY

Foldable water tank 1,5 m3 & Foldable liquid transport bladder 10 m3

ASK FOR LEAD TIME FOR DELIVERY



"From Stand-alone Ideas to Comprehensive Solutions"

RCM® Emergency Solutions – Catalogue

POWER



Tespak Solar Panel 42W, 1 kg & Tespak Mobile Charger 150W, 2,6 kg



Tespak Mobile Solar Plant 1000W, 12,6 kg



**ASK FOR LEAD TIME FOR
DELIVERY**

For technical details see pages 22 -24

**Energy pack 1500, SL1500, Light Solarpanel, Battery & Inverter pack
1500 W, 53 kg**

**LEAD TIME FOR DELIVERY
1-30 pcs IN STOCK
1 week FCA Helsinki**



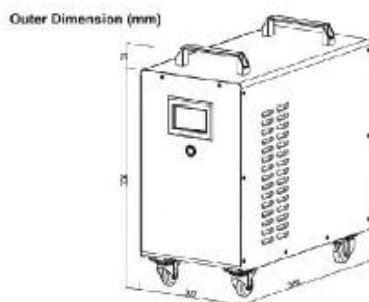
For technical details see page 25



"From Stand-alone Ideas to Comprehensive Solutions"

RCM® Emergency Solutions – Catalogue

Solar power set PS4020 (4 kW) and PS3215 (3,2kW)
4 x PV soft panels + inverter + li-on battery



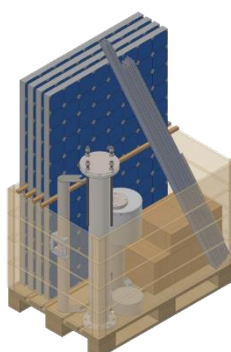
**ASK FOR LEAD TIME
FOR DELIVERY**

Minimi 12 weeks

**For technical details see
page 26**



PV-2M Solar panel station, 158kg, 600Wp



LEAD TIME FOR DELIVERY

**1-3 pcs 1 week,
4-10 pcs 6 weeks,
11-25 pcs 8 weeks
FCA Mariehamn**

For technical details see page 27

PV-2 Solar tracking framework, 121 kg, for 2 panels max 1200x2100 mm



LEAD TIME FOR DELIVERY

**1-3 pcs 1 week,
4-10 pcs 6 weeks,
11-25 pcs 8 weeks
FCA Mariehamn**

For technical details see page 28

"From Stand-alone Ideas to Comprehensive Solutions"

RCM® Emergency Solutions – Catalogue

TC1000 Solar Thermal Collector, 164 kg, Heats 150 L of water 50°C /sunny day



LEAD TIME FOR DELIVERY

1-3 pcs 1 week,
4-10 pcs 6 weeks,
11-25 pcs 8 weeks
FCA Mariehamn

For technical details see page 29

**Following the sun delivers 30-60% more energy
than an equivalent stationary installation**

LIGHTING

Camp light; Baselight led 420X, 30 kg



50.000 Lumen
420 W
30 Kg (66lb)



ASK FOR LEAD TIME FOR DELIVERY

For technical details see page 30

Camp and worklight set; Mberg led 48V + Batterybacked emergency light system



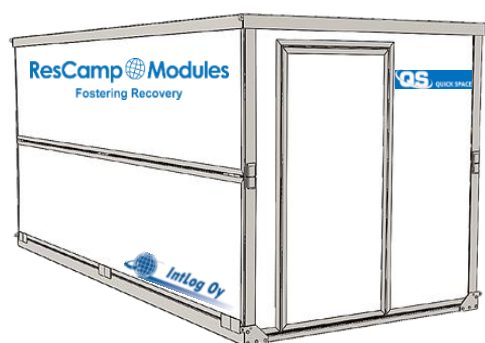
LEAD TIME FOR DELIVERY

4 weeks
FCA Helsinki

"From Stand-alone Ideas to Comprehensive Solutions"

SHELTER

QuickSpace light, foldable container shelter



LEAD TIME FOR DELIVERY
1-50 pcs 8 weeks,
FCA Tampere or FCA Pori

For technical details see page 31



S-Model 60 m² multipurpose, aluminium beam, slidetech shelter



LEAD TIME FOR DELIVERY
20 weeks
FCA Helsinki

For technical details see page 32

"From Stand-alone Ideas to Comprehensive Solutions"

RCM® Emergency Solutions – Catalogue

Technical Reflectiv Shade Screen Solaro 6125 O E AW for standard 20 feet ISO containers

 **svensson**



ASK FOR LEAD TIME FOR DELIVERY

For technical details see page 33



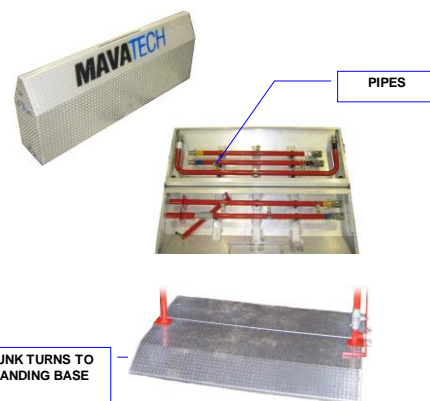
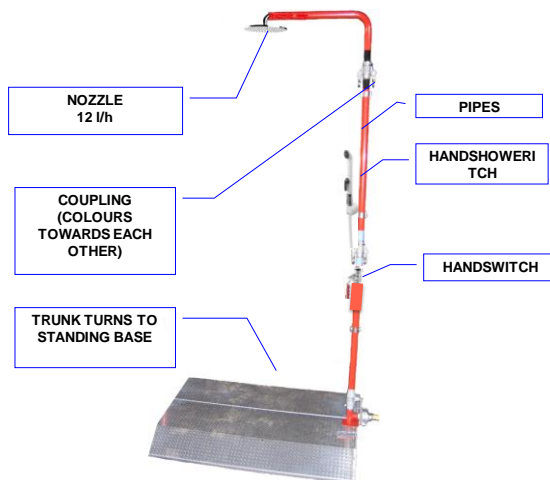
SANITATION & DISINFECTION

Field shower MAVA, light portable, water-saving, with cabin tent 23 + 20 kg

MAVATECH
NBC DECONTAMINATION

LEAD TIME FOR DELIVERY 12 weeks
FCA Helsinki

For technical details see page 34



"From Stand-alone Ideas to Comprehensive Solutions"

RCM® Emergency Solutions – Catalogue

Field latrine Green toilet 120 + MAVA cabin, 12+22+23 kg

Pikku Vihreä



LEAD TIME FOR DELIVERY 12 weeks

FCA Helsinki

For technical details see pages 35 – 38



MAVA Water heater, diesel driven, flow through heating, 74 kg



MAVATECH
NBC DECONTAMINATION

LEAD TIME FOR DELIVERY

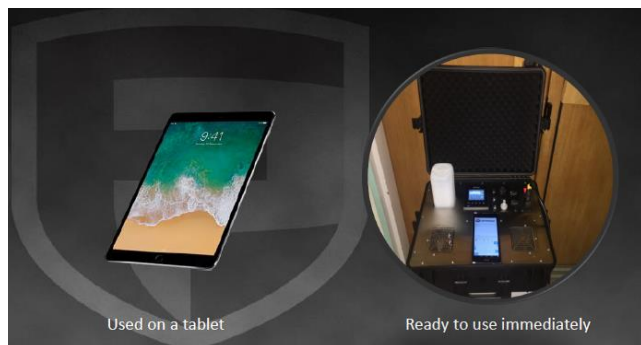
12 weeks

FCA Helsinki

For technical details see page 39

Portable quick decontamination system

 **Intlog Oy**



LEAD TIME FOR DELIVERY

3 weeks, FCA Tampere

For technical details see page 40



CLEAMIX

"From Stand-alone Ideas to Comprehensive Solutions"

RCM® Emergency Solutions – Catalogue

Hand sanitizer foam



private label example

LEAD TIME FOR DELIVERY, FCA Riga

12x500 ml Box, 2 weeks

864x500 ml Europallet, 10 weeks

4860x50 ml Europallet, 10 weeks



IntLog Hand Sanitizer Foam is based on the Nolla™ silver polymer technology.

Comparison table of active ingredients in hand sanitizers		
	IntLog Hand Sanitizer Foam	Alcohol Based Gel
Approved for use	✓	✓
Effective against bacteria	✓	✓
Effective against viruses	✓	✗
Instant efficacy	✓	✓
Extended efficacy	✓	✗
Hypoallergenic	✓	✗
Convenience of use	✓	✗
Cost effectiveness	✓	✗

COOKING

Field Cooker FC30 and FC75



FC30 cooker with Gas burner



FC75D cooker with Diesel Burner

LEAD TIME FOR DELIVERY

FC 75 1-10 pcs in Stock, 1 week

FC 75 more than 10 pcs 12 weeks

FC 30 12 weeks

LFK 150 12 weeks

FCA Helsinki

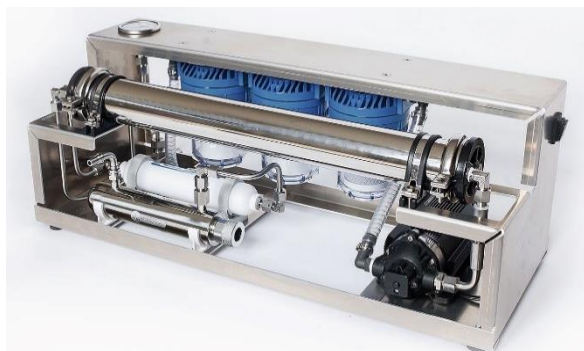
For technical details see pages 41 - 43

Light Field Kitchen LFK 150



"From Stand-alone Ideas to Comprehensive Solutions"

Mobile Water Treatment Unit SolaRO Mini 50, 15 kg by SWS



SOLAR WATER
SOLUTIONS

SolarRO Mini 50 is a compact reverse osmosis (RO) system capable of making pure drinking water 50 L/h from a fresh water source. It has 1 pcs 2521 brackish water membranes.

Frame is made of sea grade aluminium and tubes of 316L stainless steel. SolarRO Mini 50 does not need any chemicals to operate. The whole system is easy and quick to set up and maintain.



Complete SolaRO Mini 50 drinking water supply system

Technical details:

- **Product name:** SolarRO Mini 50, **Feed water:** Borehole/Lake/ River/ Brackish
- **Toxic and chemical removal:** reverse osmosis, activated carbon
- **Disinfection:** reverse osmosis, activated carbon, UV reactor
- **Maximum permeate flux:** 25-50 L/h from sweet water source
- **Motor:** 12VDC/120W, **Pump:** RO 170psi; free flow 5,5 LPM
- **System pressure:** 8 - 10 bar, automatically self-adjusting
- **Pressure Vessel:** 1 x 2521, SS 316L, **Membrane:** 2521 polyamide, **RO tube:** SS 316L
- **Pre-filter:** 2 x 5" (50 µm, 5 µm), **Pre-filter casing:** 3 x 5" PVC
- **Permeate post treatment:** 5"/800 mg Activated Carbon + UV reactor
- **UV lamp lifespan:** 9,000 hours
- **Permeate quality:** pH 6.0 - 8.5, 100 % disinfected
- **Solar or other DC power source:** 12 VDC
- **PV panel recommended:** 2x140 Wp or 6x42W soft foldable Tespack Solar panels
- **Unit dimensions:** L = 730; W = 280; H = 290
- **Weight:** 15kg,
- **Warranty:** 2 years

SWS SolaRO Mini 50 water treatment unit is a ResCamp Modules™ component

ResCamp Modules
Fostering Recovery

"From Stand-alone Ideas to Comprehensive Solutions"

Mobile Water Treatment Unit SolaRO Mini 150, 28 kg by SWS



SOLAR WATER
SOLUTIONS

SolarRO Mini 150 is a compact reverse osmosis (RO) system capable of making pure drinking water 150 L/h from a fresh water source. It has 2 pcs 2521 brackish water membranes.

Frame is made of sea grade aluminium and tubes of 316L stainless steel. SolarRO Mini 150 does not need any chemicals to operate. The whole system is easy and quick to set up and maintain.



Complete SolaRO Mini 150 drinking water supply system

Technical details:

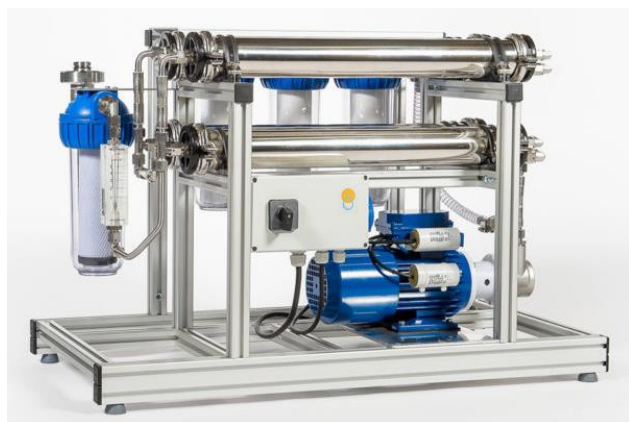
- **Product name:** SolarRO Mini 150, **Feed water:** Borehole/Lake/ River/ Brackish
- **Toxic and chemical removal:** reverse osmosis, activated carbon
- **Disinfection:** reverse osmosis, activated carbon, UV reactor
- **Maximum permeate flux:** 60 L/h – 150 L/h from brackish - sweet water source
- **Motor:** 0,37kW/230 VAC or 300W/24 V, **Pump:** Rotary Vane
- **System pressure:** 9 - 12 bar, automatically self-adjusting
- **Pressure Vessel:** 2 x 2521, SS 316L, **Membrane:** 2521 polyamide, **RO tube:** SS 316L
- **Pre-filter:** 3 x 10" (100 µm, 50 µm, 5 µm), **Pre-filter casing:** 3 x 10" PVC
- **Permeate post treatment:** 5"/800 mg Activated Carbon + UV reactor
- **UV lamp lifespan:** 9,000 hours
- **Permeate quality:** pH 6.0 - 8.5, 100 % disinfected
- **PV panel recommended:** 3x140 Wp, 2x250 Wp or 10x42W soft foldable Tespack Solar panels
- **Unit dimensions:** L = 770; W = 450; H = 440
- **Weight:** 28 kg,
- **Warranty:** 2 years

SWS SolaRO Mini 150 water treatment unit is a ResCamp Modules™ component

ResCamp Modules
Fostering Recovery

"From Stand-alone Ideas to Comprehensive Solutions"

Deployable Water Treatment Unit SolaRO PRO 300, 45 kg by SWS



SOLAR WATER
SOLUTIONS

SolarRO PRO 300 is a compact reverse osmosis (RO) system capable of making pure drinking water 300 L/h from a fresh water source. It has 3pcs 2521 brackish water membranes.

Frame is made of sea grade aluminium and tubes of 316L stainless steel. SolarRO PRO 300 does not need any chemicals to operate. The whole system is easy and quick to set up and maintain.

Technical details:

- **Product name:** SolarRO PRO 300,
- **Feed water:** Borehole/Lake/ River/ Brackish
- **Toxic and chemical removal:** reverse osmosis, activated carbon
- **Disinfection:** reverse osmosis, activated carbon, UV reactor
- **Maximum permeate flux:** 190 L/h – 300 L/h from brackish - sweet water source
- **Motor:** 0,5kW/230 VAC or 400W/24 V, **Pump:** Rotary Vane
- **System pressure:** 14 - 15 bar, automatically self-adjusting
- **Pressure Vessel:** 4 x 2521, SS 316L, **Membrane:** 4x2521 polyamide, **RO tube:** SS 316L
- **Pre-filter:** 3 x 10" (100 µm, 50 µm, 5 µm), **Pre-filter casing:** 3 x 10" PVC
- **Permeate post treatment:** 10"/800 mg Activated Carbon + UV reactor
- **UV lamp lifespan:** 9,000 hours
- **Permeate quality:** pH 6.0 - 8.5, TDS 37- 95 mg/L, 100 % disinfected
- **PV panel recommended:** 4x250 Wp
- **Unit dimensions:** L = 880; W = 590; H = 600
- **Weight:** 45 kg,
- **Warranty:** 2 years

SWS SolaRO Mini 150 water treatment unit is a ResCamp Modules™ component

ResCamp Modules
Fostering Recovery

"From Stand-alone Ideas to Comprehensive Solutions"

Mobile Water Treatment Unit SolarUV, 1000L/h, 12 kg by SWS



SOLAR WATER
SOLUTIONS

SolarUV is designed to make safe drinking water from fresh water sources. Maximum safe water flow is 1,000 litres/hour.

Also a wall mounted version of this is available

Polypropylene filters remove sediment and larger particles from the feed water. Activated carbon removes toxins, chemicals, odours and bad taste from water. The UV light is designed to kill microorganisms such as bacteria, viruses, moulds and pathogens. SolarUV is effective against common problems as giardia and E.Coli.

SolarUV weight is only 12 kg. It is portable and easy to set up. Filters are easy to change and required maintenance is very low. SolarUV set do not contain any chemicals or batteries that would need to be declared as “Dangerous Goods” according to applicable international regulations, such as IATA and similar.

Technical details:

- **Product name:** SolarUV
- **Weight:** 12 kg
- **Sediment removal:** 10” Polypropylene filters 50 µm, 5 µm
- **Toxic and chemical removal:** 10” 800 mg Activated Carbon
- **Disinfection:** UV reactor
- **Maximum flow:** 1,000 L/h
- **Power requirement:** 17 W
- **UV lamp lifespan:** 9,000 h
- **Power source:** 230 V AC or 12V DC
- **PV panel recommended:** 1x140 Wp or 4x42W soft foldable Tespack Solar panels
- **12 V pump:** Automatic demand diaphragm pump, flow 17 L/min, 2.8 bar cut-off, max amp draw 15 A.
- **230 V pump:** Automatic demand diaphragm pump, flow 14 L/min, 2.8 bar cut-off.

SWS SolarUV water treatment unit is a ResCamp Modules™ component

ResCamp Modules
Fostering Recovery

“From Stand-alone Ideas to Comprehensive Solutions”

Mobile Water Treatment Unit SolaRO 450, 450L/h, 75 kg by SWS

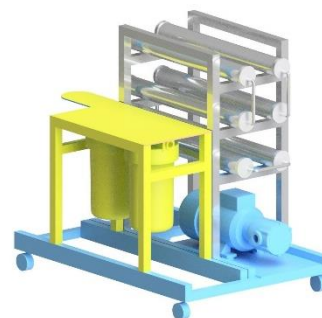


SOLAR WATER
SOLUTIONS

SolarRO PRO 450 is a compact reverse osmosis (RO) system capable of making pure drinking water 450 L/h from a fresh water source. It has 6 pcs 2521 brackish water membranes.

Frame is made of sea grade aluminium and tubes of 316L stainless steel. SolarRO PRO 450 does not need any chemicals to operate. The whole system is easy and quick to set up and maintain.

The modular emergency model can be packed into 3 separate cases, each weighing less than 32 kg. The modules are described in the picture, each showed with different colour. The modules are very easy and quick to assemble in only a few minutes. Electric connections with pre-installed plugs and sockets. Unit tubes have tread connections. Feed water tubes with the usual clamps.



Optionally the package includes a unique sediment removal mesh filter system, which is self-flushing and is installed between the raw water pump and the RO unit. This makes it possible to use very turbid water as raw water for example in heavily flooded areas. There is no need to use heavy sand filters.

Technical details:

- **Product name:** SolarRO PRO 450, **Feed water:** Lake/ River/ Brackish
- **Toxic and chemical removal:** reverse osmosis, activated carbon
- **Disinfection:** reverse osmosis, activated carbon, UV reactor
- **Maximum permeate flux:** 450 L/h from sweet water source, **Tested product water (TDS 500 – 5,000 mg/L) flux:** 450 L/h – 250 L/h, **Test water temp:** 20°C, Salt Rejection: 99 %
- **Motor:** 0.75 kW, **Pump:** Rotary Vane 700 L/h
- **System pressure:** 12 - 14 bar, automatically self-adjusting
- **Pressure Vessel:** 6 x 2521, SS 316L, **Membrane:** 6 x 2521 polyamide, **RO tubing:** SS 316L
- **Pre-filter:** optional special self-flushing 20 µm and 5 µm mesh filtering system
- **Pre-filter:** 2 x 10" (20 µm, 5 µm polypropylene), **Pre-filter casing:** 2 x 10" Big Blue PVC
- **Permeate post treatment:** 10"/800 mg Activated Carbon + UV reactor
- **UV lamp lifespan:** 9,000 hours
- **Permeate quality:** pH 6.0 - 8.5, TDS 37- 95 mg/L, 100 % disinfected
- **Power requirement:** 750 W, **Generator power supply:** 230 V AC
- **Solar or other DC power source:** DC voltage<400V, **PV panels recommended:** 8x250 Wp
- **Unit dimensions:** L = 910; W = 822; H = 980
- **Weight:** 75kg,
- **Modular emergency model:** 3x <32kg packages (incl source water feed pump & tubes).
- **Warranty:** 2 years

SWS SolaRO 450 water treatment unit is a ResCamp Modules™ component

ResCamp Modules
Fostering Recovery

"From Stand-alone Ideas to Comprehensive Solutions"

Solar Panel 42W, Foldable and flexible, 1kg by Tespack



- Dimensions: 300mm x 190mm x 50mm (when closed)
- Total area needed for the solar panel when folded open: 57.1cm x 47cm
- 22% efficient, 42W
- Weight: 1kg
- PET lamination
- Output DC12V/2.5A, USB 5V/2.1A

Tespack provides mobile energy solutions that devices on-the-go and create energy from the sun in a sustainable, green way. Tespack has developed power banks that can power any devices up to 1000W and their solar panels start from 42W and can be easily connected together for creating more energy faster from the sun.

All Tespack products are made to work in extreme weather conditions and they have all been tested and used by leading tech centres, scientists, NGOs and military to ensure that the products are made to last. All products are easy to use, simply plug and play. In addition to this, Tespack solar panels are some of the most high efficient solar panels in the market which provides faster charging even in half cloudy weather. Power banks and solar panels have been made to be lightest in the market while also being the most cost-efficient.

Tespack Solarpanel 42W is a ResCamp Modules™ component

ResCamp Modules
Fostering Recovery

"From Stand-alone Ideas to Comprehensive Solutions"

Mobile Charger Set 150W, 2,6 kg by Tespack



Mobile Charger 150W set

- 3 x 20 000mAh (3.7V, input DC 19V/1.2A, output DC 12/16/19V/4A) power banks can charge any device up to 150W
- DC to AC inverter
- Charging times: charge 1 power bank from the wall socket and with the 42W solar panel in 3.5 hours. Charge all 3 power banks from the sun with 2 x 42W in 4.5 hours.
- Total weight: 2.6kg

2 x 42W foldable solar panels included

- for charging all 3 power banks simultaneously from the sun
- total area needed for the solar panel when folded open: 57.1cm x 47cm
- Dimensions: 300mm x 190mm x 50mm (when closed)
- 22% efficient, 42W
- Weight: 1kg
- PET lamination
- Output DC12V/2.5A, USB 5V/2.1A

Tespack provides mobile energy solutions that devices on-the-go and create energy from the sun in a sustainable, green way. Tespack has developed power banks that can power any devices up to 1000W and their solar panels start from 42W and can be easily connected together for creating more energy faster from the sun.

All Tespack products are made to work in extreme weather conditions and they have all been tested and used by leading tech centres, scientists, NGOs and military to ensure that the products are made to last. All products are easy to use, simply plug and play. In addition to this, Tespack solar panels are some of the most high efficient solar panels in the market which provides faster charging even in half cloudy weather. Power banks and solar panels have been made to be lightest in the market while also being the most cost-efficient.

Tespack Mobile Solar Plant is a ResCamp Modules™ component

ResCamp Modules
Fostering Recovery

"From Stand-alone Ideas to Comprehensive Solutions"

Mobile Solar Plant 1000W, 12,6 kg by Tespack



Mobile Charger 1000W Set

- PAX case/bag for carrying all panels and power bank charger (can fit 10 solar panels inside)
- 1000W power bank (weight 12.6kg)
- Input: 32Vdc/8.0A (MAX)
- Output:
 - AC: 220Vac/1000W/50hz,
 - 5V: 5Vdc/3.0A(MAX),
 - 12V: 12Vdc/8.0A(MAX)

Four 42W foldable solar panels included

- Dimensions: 300mm x 190mm x 50mm (when closed)
- Total area needed for the solar panel when folded open: 57.1cm x 47cm
- 22% efficient, 42W
- Weight: 1kg
- PET lamination
- Output DC12V/2.5A, USB 5V/2.1A

Tespack provides mobile energy solutions that devices on-the-go and create energy from the sun in a sustainable, green way. Tespack has developed power banks that can power any devices up to 1000W and their solar panels start from 42W and can be easily connected together for creating more energy faster from the sun.

All Tespack products are made to work in extreme weather conditions and they have all been tested and used by leading tech centres, scientists, NGOs and military to ensure that the products are made to last. All products are easy to use, simply plug and play. In addition to this, Tespack solar panels are some of the most high efficient solar panels in the market which provides faster charging even in half cloudy weather. Power banks and solar panels have been made to be lightest in the market while also being the most cost-efficient.

Tespack Mobile Solar Plant is a ResCamp Modules™ component

ResCamp Modules
Fostering Recovery

"From Stand-alone Ideas to Comprehensive Solutions"

Energy pack SL1500 by Esko Finland

Light Solarpanel, Battery & Inverter pack, 1500 W, 53 kg



- A power unit for houses, camping, boating and small construction needs.
- Brings electricity to places where it is otherwise unavailable.
- You can use tools such as drills, saws or mixers operating on up to 1500W maximum.
- Suitable for the garden or the terrace, for example, to power a grill or lighting fixtures.
- The SL-energy pack allows you to watch TV, vacuum clean, charge your phone or laptop battery and use kitchen appliances.
- It also acts as a power source to jumpstart a car battery.
- Suitable for anyone who wants a mobile power supply without the need for expensive fixed installations.
- The energy pack battery can be charged with its five built-in solar panels, AC power wall outlets or a car 12V DC outlet.
- Charges its 100 Ah gel battery fully ecologically with its five 16 W (80 W) monocrystalline panels. The panels open up around the unit, absorbing energy efficiently with up to 17 percent efficiency.
- The battery charge level is easy to check from the digital display.
- Options for connecting additional batteries or panels (for example 5 Tespack 42W foldable panels) if necessary.
- Easily moved around with its telescopic handle and wheels

Technical details:

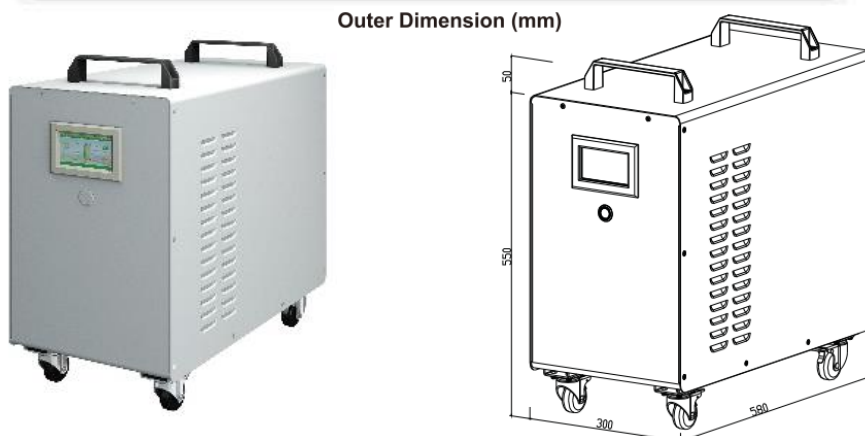
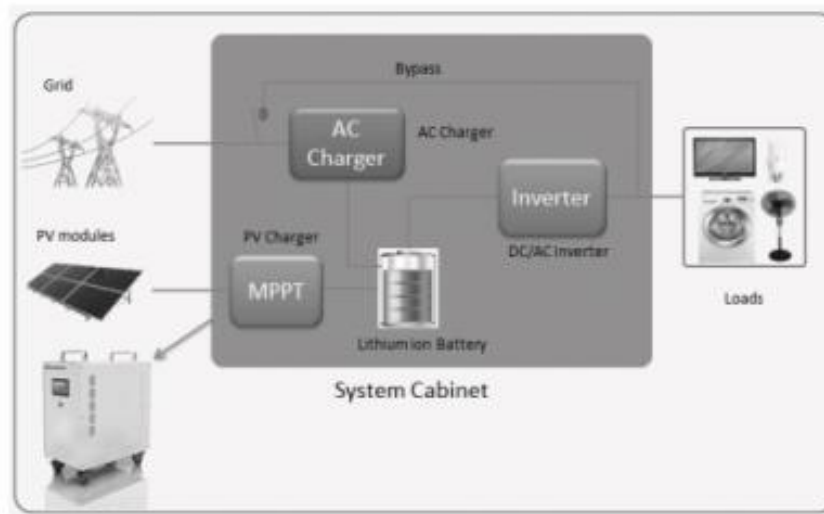
- 1500W Inverter, 3600 W Peak power
- 5 x 16W Monocrystalline panels
- Option for additional panels max 220W, for example 5 x 42 W Tespack foldable panels
- 100Ah Gel battery, option for additional batteries max 240Ah
- 2 x USB ports, 2 x 230 V (AC) socket, 2 x 12 V (DC) socket
- Digital screen, telescopic handle and wheels
- Dimensions: 530 mm x 530 mm x 370 mm
- Weight: 53 kg

Energy Pack SL1500 is a ResCamp Modules™ component

ResCamp Modules
Fostering Recovery

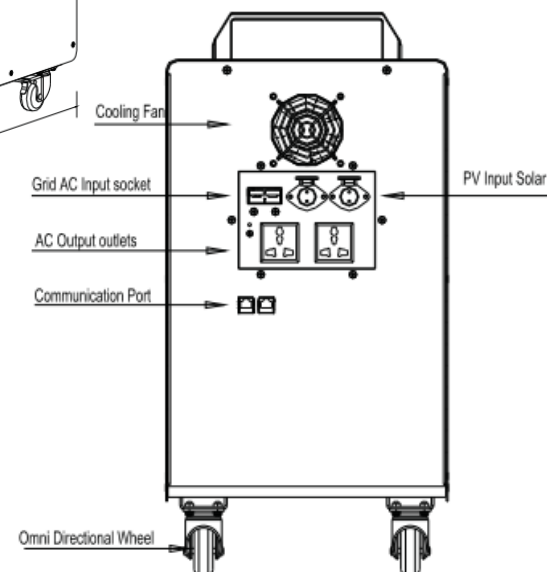
"From Stand-alone Ideas to Comprehensive Solutions"

Mobile Solar Power set 4 kWh, 62 kg by IntLog



Mobile Battery and Inverter set PS4020B

- **Battery (Li-ion, 77,2 Ah – 51,8 VDC)**
 - 42 VDC
 - 4000 Wh
 - Output power 2000 W
 - Peak power 3000 W (10 sec)
- **Solar**
 - Max PV power 1500 W
 - Start-up voltage 75 VDC
 - MPPT input voltage 75 – 140 VDC
 - Max input voltage 150 VDC
 - Suitable number of PV modules 4 pc 190-200 Wp
- **Load examples**
 - Constant load 800 W – 5 hours without charging
 - Constant load 500 W – 8 hours without charging
 - Constant load 300 W – 13,3 hours without charging



IntLog Mobile Solar Power Set is a ResCamp Modules™ component

ResCamp Modules
Fostering Recovery

"From Stand-alone Ideas to Comprehensive Solutions"

PV-2M Solar panel station by Heliomotion



Key specifications

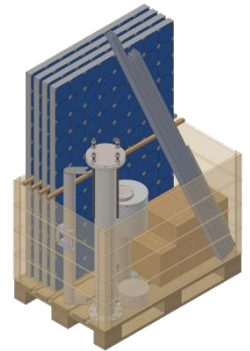
Model: PV-2M Collector type: Photovoltaic solar panel Tracker type: Dual-axis Manufacturer: HelioZenit AB

Performance

Rated effect: 600 watt Daily energy yield: 5-7 kWh Annual energy yield: 800-1500 kWh

Dimensions

Length: 2100 mm Width: 1580 mm Area: 3.3 m² Weight: 100 kg. Total package weight 158 kg



Overview

Heliomotion PV-2M is a high efficiency, dual-axis tracking photovoltaic solar panel station. By following the sun, and using high efficiency solar panels, PV-2M delivers up to twice as much energy as a conventional, stationary solar panel with the same dimensions.

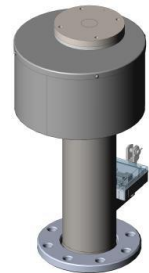
Panel features

- The station holds two 300 watt high performance, high durability MaySun solar panels as standard. Other panels can be offered as options.
- Generates 5-7 kWh electricity per sunny day, up to 1000 kWh per year in northern Europe or up to 1500 kWh per year in southern Europe.



Tracker features

- Automatically determines sun's location from anywhere in the world using GPS and internal calculations.
- Innovative two axis design using only one actuator.
- High precision tracking to maximize energy production.
- Rotates 180° horizontally and 15° to 70° vertically.
- Reliable, low energy consumption and silent operation.
- Fast and cost efficient installation.



Options

- On-grid package including microinverter
- Off grid package including li-on or gel batteries
- Bigger versions for 3 (PV-3M, 182 kg), 4 (PV-4M, 227 kg) and 6 (PV6M, 264 kg) panels

Heliomotion Solar panel station is a ResCamp Modules™ component



"From Stand-alone Ideas to Comprehensive Solutions"

PV-2 Solar tracking framework by Heliomotion



Key specifications

Model: PV-2 Collector type: Optional Tracker type: Dual-axis
Manufacturer: HelioZenit AB

Performance

Number of panels: 2 Max panel width: 1200 mm Max panel length: 2100 mm

Dimensions

Length: 2400 mm Width: 1020 mm Weight: 121 kg

Overview Heliomotion PV-2 is a dual-axis solar tracker for home use. The framework allows for easy mounting of two photovoltaic solar panels or thermal solar collectors. By following the sun a Heliomotion delivers 30-60% more energy than an equivalent stationary installation.

Framework features

- Sliding rails provide a flexible framework that can carry two panels of standard size.
- Framework can be tilted horizontally allowing for easy mounting of panels.
- Complete system of panel fasteners and other mounting accessories included.

Tracker features

- Automatically determines sun's location from anywhere in the world using GPS and internal calculations.
- Innovative two axis design using only one actuator.
- High precision tracking to maximize energy production.
- Rotates 180° horizontally and 15° to 70° vertically.
- Reliable, low energy consumption and silent operation.
- Fast and cost efficient installation.

Options

- Bigger versions for 3 (PV-3, 126 kg), 4 (PV-4, 152 kg) and 6 (PV6, 162 kg) panels

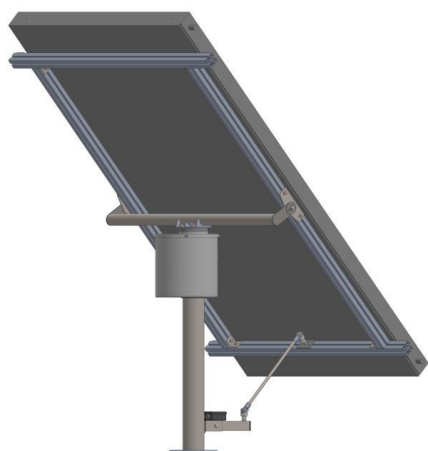


Heliomotion Solar tracking framework is a ResCamp Modules™ component

ResCamp Modules
Fostering Recovery

"From Stand-alone Ideas to Comprehensive Solutions"

TC1000 Solar Thermal Collector by Heliomotion



Key specifications: Model TC-1000 with flat plate collector and Dual-axis tracker by HelioZenit AB

Performance: Peak effect (ΔT 0°): 1400 watt Average effect (ΔT 40°): 1000 watt Daily energy yield: 8-12 kWh

Physical specifications Length: 2000 mm Width: 1060 mm Area: 2.1 m² Weight: 164 kg

Overview

Heliomotion TC-1000 is a high efficiency, dual-axis tracking thermal solar collector. By following the sun, and by using high efficiency collectors, the TC-1000 delivers up to twice as much energy as a same-sized stationary thermal collector.

Collector features

- The collector consists of a high performance Onnline flat plate collector to maximize the efficiency.
- Heats 150 liters of water 50°C per sunny day, the average daily consumption of a 2-3 person household.

Tracker features

- Automatically determines sun's location from anywhere in the world using GPS and internal calculations.
- Innovative two axis design using only one actuator.
- High precision tracking to maximize energy production.
- Rotates 180° horizontally and 15° to 70° vertically.
- Reliable, low energy consumption and silent operation.
- Equipped with automatic high temperature protection, turning the collector away to prevent overheating.



Options

- Pump station and related accessories to be included in the package

Heliomotion Solar Thermal Collector is a ResCamp Modules™ component

ResCamp Modules
Fostering Recovery

"From Stand-alone Ideas to Comprehensive Solutions"

Baselight 420X, 50 000 Lumen, 30 kg by Prime Design Sweden

Baselight is a new generation LED light tower built from the ground up with input from professionals in the rescue and rental industry. A modern light product using the latest LED technology and materials available to meet the demand for a more flexible light tower. Baselight is a light system capable to compete with much larger light towers and can easily outperform a 1600W halogen system but more importantly in these areas: Performance, agility and economy.



50.000 Lumen
420 W
30 Kg (66lb)



Key features

- Deployed by a single person in 30 seconds without aid of machinery
- Produces 50 000 lumen with 420 power consumption
- Configured as 360 or 180 degree floodlight
- Produces about 30% more light and consumes 75% less power than a 4x400W halogen system

- Requires no prior training or certification and is simple to operate
- Multiple units can be operated from a portable power source
- Built for easy replacement of parts with a modular design
- Can be used indoors as well as outdoors (IP67) and in extreme temperatures
- Safe to operate with colour coded guidance, takes up little space when stored
- Can be fitted with smart accessories (GPS tracking, Wi-Fi, Video Surveillance etc.)
- 50 000 hours life span on LED, 5 Year warranty on structural components

Technical data

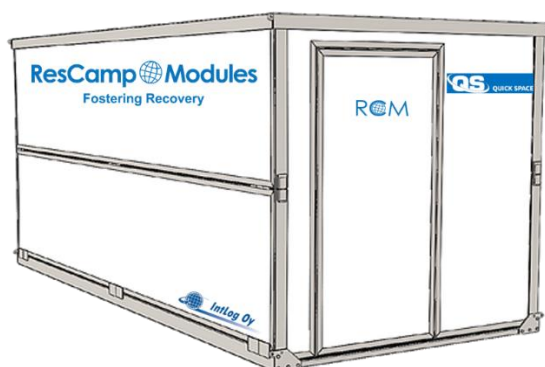
- Wind resistance up to 20 m/s without support
- Luminous flux 50 000 Lumen, Colour temperature 6000 Kelvin
- Surrounding temperature -50 to + 50 degree C, IP Rating 67
- Voltage 90 to 305VAC/50hz, Power connector CEE or Schuko
- Power consumption 15 to 420 Watt (Dimmable)
- Fully extended height 4.5 Meters (15feet)
- Weight 30 Kg (66lb), Transport dimensions 1200mm x 300mm

Baselight 420X is a ResCamp Modules™ component

ResCamp Modules
Fostering Recovery

"From Stand-alone Ideas to Comprehensive Solutions"

QuickSpace shelter, 11m², 650 kg by IntLog



QuickSpace is a perfect modular space and accommodation solution for aid organisations in disaster areas, or as temporary office or storage space. QuickSpace is the fastest assembled modular space available in the market and the most cost efficient solution both for transportation and when storing between use.

QuickSpace Combi is used to create larger spaces. You can make bigger accommodation, office or any other spaces leaving one or both sides open and connecting as many QuickSpace containers together as you wish. It is possible to create up to 50 m² ready space every hour using the QuickSpace Combi. There is no limitation on amount of connected QuickSpace Combi spaces.

Basic model assembly from transporting package in only 5 min.

- Transport position with a thickness of only 300 mm.
- Inside 20' sea freight container you can transport up to 7 QS containers
- With truck up 16 QS containers and with full trailer combination up to 24 QS containers
- Dimensions: 5100 (L) x 2300 (W) x 2300 (H), Weight only 650 kg
- Material: Aluminium frame, Laminate surface, 40 Urethane insulation
- On Combi model, with leaving one or both sides you can combine containers to make bigger spaces.



IntLog QuickSpace is a ResCamp Modules™ component

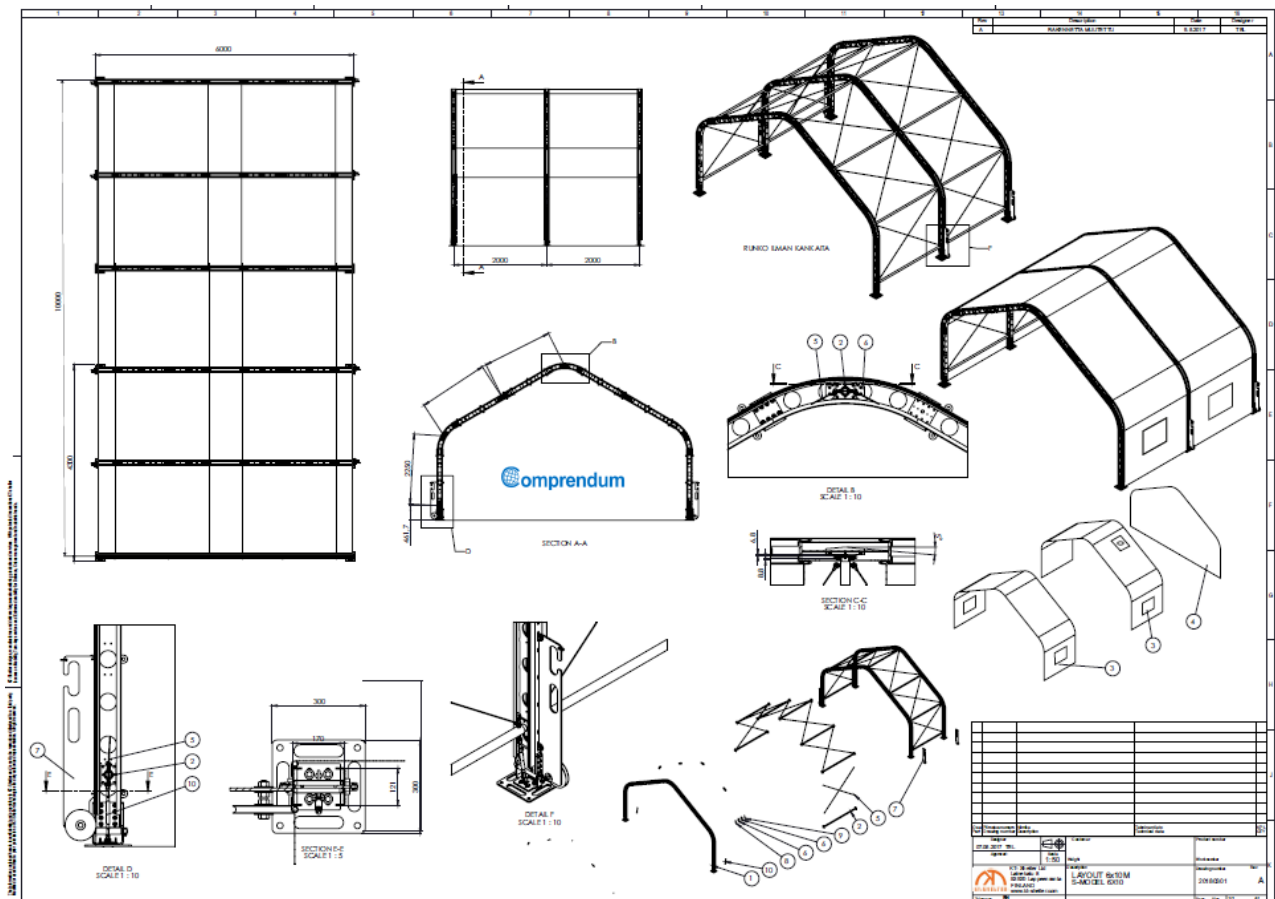
ResCamp Modules
Fostering Recovery

"From Stand-alone Ideas to Comprehensive Solutions"

S-Model 60 m² multipurpose, alubeam slidetech tent by KT-Shelter



S-Model aluminium beamed PVC-tents with soft floor. These can be produced in tailored sizes. The 6x10m tent has 5 aluminium profile beams (7 parts/beam, weight 12 kg each) and 4 packages of canvas (weight ca 20 kg) between beams to be assembled by patented **Slidetech** system. In addition there are 2 end canvases and 2 pieces of floor to each tent. One (6x10m) tent weight 650 kg size packed on euro pallets is ca 2,5 m3.



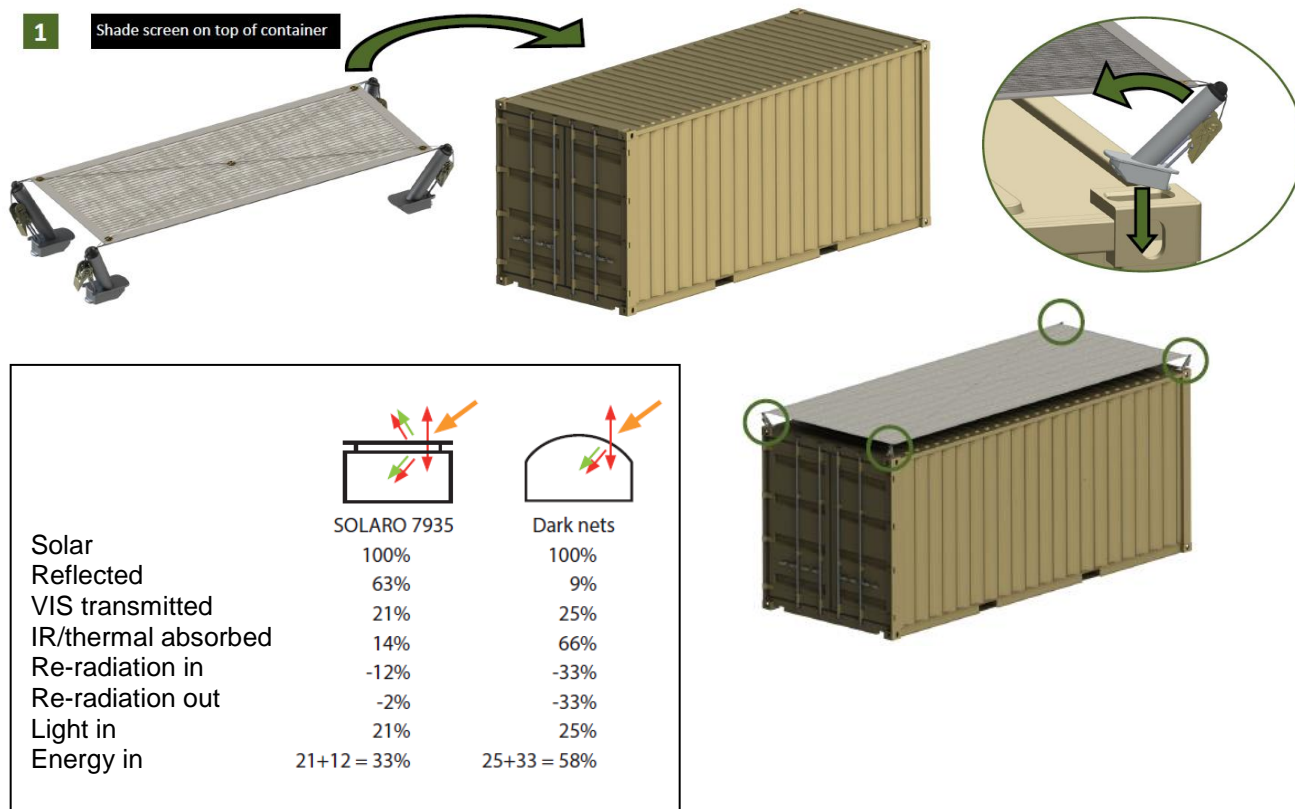
KT-Shelter S-Model 60 m² shelter is a ResCamp Modules™ component

ResCamp Modules
Fostering Recovery

"From Stand-alone Ideas to Comprehensive Solutions"

Container Shade Screen by Svensson

 **svensson**



Efficient shading of containers and sun protection with **SOLARO TECHNICAL REFLECTIVE SHADE SCREEN**

Benefits of Svensson SOLARO:

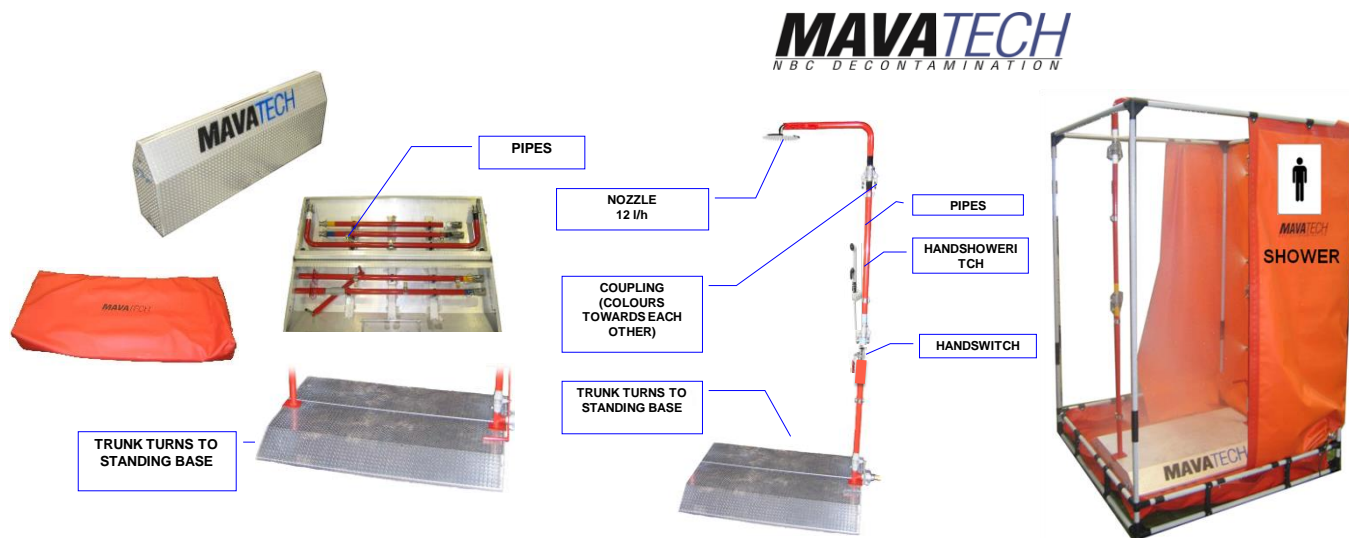
- Reflects solar radiation
- The open structure of the screen improves air transportation and ventilation
- Daytime a lower temperature inside the facility
- Night time the temperature is kept longer inside

Svensson Container Shade Screen is a ResCamp Modules™ component

ResCamp  **Modules**
Fostering Recovery

"From Stand-alone Ideas to Comprehensive Solutions"

Field Shower, 2x 23 kg by Mavatech



The shower solution is very light-weight and quick to set up by unskilled labor force and also easily disassembled for moving to a new site or storage. Set up time for one person is approximately 4 minutes. Water consumption is reduced to a minimum as shower heads flow is reduced down to 12 litres/minute. Shower does not need any electricity.

Shower cabins are free-standing and UV protected for outdoor-use. There are two water backs in curtains (30 litres + 30 litres) to ensure the stability of cabin in hard wind circumstances. All exposed surfaces are non-porous and easy to clean. Cabins are equipped with separate solar or gravity powered led lights. The shower cabin is equipped with a floor with a pool enabling the recapturing or guiding the shower water further away. The cabin tents for showers are very light-weight and easy to palletize for air-freight.

Size of cabin when assembled: length 140 cm, width 140 cm, height 220 cm

Cabin tent package: PVC suitcase, length 60 cm, width 150 cm, height 20 cm, weight 23 kg

Shower package: Aluminium suitcase: length 45 cm, width 120 cm, height 20 cm, weight 23 kg

Technical details of cabin canvas:

- Canvas of cabins is Scanplan 5140PF
- Base fabric: 1100 dtex polyester
- Coating: both sides PVC
- Total weight: 530 g/m²
- Tear strength: 250/225 N (DIN 53363)
- Tensile strength: 1,700/1,500 N/5 cm (EN ISO 1421)
- Adhesion: 75 N/5 cm
- Temperature resistance: +70 C to -30 degrees C (SFS-EN 1876-1)

Mavatech Field Shower is a ResCamp Modules™ component

ResCamp Modules
Fostering Recovery

"From Stand-alone Ideas to Comprehensive Solutions"

Latrine Cabin by Mavatech, 22 kg



The Latrine Cabin is very light-weight and quick to set up by unskilled labor force and easily disassembled for moving to a new site or storage. Set up time for one person is approximately 5 minutes.

The latrine cabin is free-standing and UV protected for outdoor-use. There are two water backs in curtains (30 litres + 30 litres) to ensure the stability of cabin in hard wind circumstances. All exposed surfaces are non-porous and easy to clean. Cabins are equipped with separate solar or gravity powered led lights. The cabin tents are very light-weight and easy to palletize for air-freight.



Cabin tent package:

PVC suitcase, length 60 cm, width 150 cm, height 20 cm, weight 23 kg

Size of cabin when assembled:

length 140 cm, width 140 cm, height 220 cm

Technical details of cabin canvas:

- Canvas of cabins is Scanplan 5140PF
- Base fabric: 1100 dtex polyester
- Coating: both sides PVC
- Total weight: 530 g/m²
- Tear strength: 250/225 N (DIN 53363)
- Tensile strength: 1,700/1,500 N/5 cm (EN ISO 1421)
- Adhesion: 75 N/5 cm
- Temperature resistance: +70 C to -30 degrees C (SFS-EN 1876-1)



Cabins are equipped with separate solar or gravity powered led lights and an automated water dispenser and a water tank of eight litres.

Mavatech Latrine Cabin is a ResCamp Modules™ component



"From Stand-alone Ideas to Comprehensive Solutions"

Field Latrine by Pikkuvihreä and Mavatech

The **Latrine solution** is composed of Pikkuvihreä **Green Toilet 120 sanitation unit** and Mavatech **Latrine Cabin**. It is very light-weight and quick to set up by unskilled labor force and easily disassembled for moving to a new site or storage. Set up time for one person is approximately 12 -15 minutes.

Green Toilet 120 sanitation unit do not need any water or electricity to operate. It separates the liquid waste from the solids inside the toilet container. The waste starts to compost already when in use and after the container is full, it can be moved by wheels to compost further and a new container can be taken into use. After 6-12 months of composting, the waste can be used on site for fertilization. The composting power is based on the double capillary base inside the tank. The double base separates the liquids and on the other hand lets the urine to be absorbed to the composting mass, thus speeding up the composting process.

Pikku Vihreä



Green Toilet is easy and pleasant to use, there is no need for special instructions and it is odour-free. One Green Toilet can serve 3-4 persons / month in continuous use. With spare containers, the capacity is practically endless. The liquid waste of the dry toilet can be either collected to a canister or filtered and let to the ground freely. If the canister option is used, the seep liquid can be poured to plants around the site to fertilize. In case the liquid will be filtered, a Geo Trap filter is available as an option. The environment (temperature, air humidity, and wind) affects the composting process, so more exact numbers can be given when the location is known.

The composting toilet is assembled under a seat which is made of plywood and equipped with a plastic toilet seat. A wind fan is assembled to boost the evaporation and keep the toilet ventilated. **The 12 kg seat** is folded for transportation. It can be assembled for use with screws (included in the package). **The 22kg toilet containers** are stackable. The material is durable LPDE-plastic, which can be used in -40 - +50 C temperature. The toilet system can easily be assembled and disassembled without special tools. Assembly instructions are included in the package. Plastic garbage bins of 35 litres with lids are included in the toilet package.



List of parts (Green Toilet 120 composting dry toilet unit): Container, Waste shaft, Wheels, Ventilation pipes, Toilet seat, Wind fan, Fixtures, Bag of dry material (peat, sawdust etc.), Liquid hose, Canister, Two Green Toilet spare containers for composting, Hanging bucket with a water dispenser for hand washing, Plastic garbage bin with a lid (35 l). Option: GeoTrap filter for seep liquid.

"From Stand-alone Ideas to Comprehensive Solutions"

Latrine cabins are free-standing and UV protected for outdoor-use. There are two water backs in curtains (30 litres + 30 litres) to ensure the stability of cabin in hard wind circumstances. All exposed surfaces are non-porous and easy to clean. Cabins are equipped with separate solar or gravity powered led lights. The cabin tents are very light-weight and easy to palletize for air-freight.

Size of cabin when assembled:

length 140 cm, width 140 cm, height 220 cm

Cabin tent package:

PVC suitcase, length 60 cm, width 150 cm, height 20 cm, weight 23 kg

Technical details of cabin canvas:

- Canvas of cabins is Scanplan 5140PF
- Base fabric: 1100 dtex polyester
- Coating: both sides PVC
- Total weight: 530 g/m²
- Tear strength: 250/225 N (DIN 53363)
- Tensile strength: 1,700/1,500 N/5 cm (EN ISO 1421)
- Adhesion: 75 N/5 cm
- Temperature resistance: +70 C to -30 degrees C (SFS-EN 1876-1)



Cabins are equipped with separate solar or gravity powered led lights and an automated water dispenser and a water tank of eight litres.

Latrine cabins can also be equipped with separate Hand Sanitizer Foam system in table top foamed bottles (500 ml). Also travel size (50 ml) bottles for use in offices are available. The hand sanitizer foam is based on the Nolla TM silver polymer technology.

Mavatech Field Latrine is a ResCamp Modules™ component



"From Stand-alone Ideas to Comprehensive Solutions"

Green Toilet 120, composting dry toilet unit by Pikkuvihreä



It is very light-weight and quick to set up by unskilled labor force and easily disassembled for moving to a new site or storage. Set up time for one person is approximately 10 minutes.

Green Toilet 120 sanitation unit do not need any water or electricity to operate. It separates the liquid waste from the solids inside the toilet container. The waste starts to compost already when in use and after the container is full, it can be moved by wheels to compost further and a new container can be taken into use. After 6-12 months of composting, the waste can be used on site for fertilization. The composting power is based on the double capillary base inside the tank. The double base separates the liquids and on the other hand lets the urine to be absorbed to the composting mass, thus speeding up the composting process.



Green Toilet is easy and pleasant to use, there is no need for special instructions and it is odour-free. One Green Toilet can serve 3-4 persons / month in continuous use. With spare containers, the capacity is practically endless. The liquid waste of the dry toilet can be either collected to a canister or filtered and let to the ground freely. If the canister option is used, the seep liquid can be poured to plants around the site to fertilize. In case the liquid will be filtered, a Geo Trap filter is available as an option. The environment (temperature, air humidity, and wind) affects the composting process, so more exact numbers can be given when the location is known.

The composting toilet is assembled under a seat which is made of plywood and equipped with a plastic toilet seat. A wind fan is assembled to boost the evaporation and keep the toilet ventilated. **The 12 kg seat** is folded for transportation. It can be assembled for use with screws (included in the package). **The 22kg toilet containers** are stackable. The material is durable LPDE-plastic, which can be used in -40 - +50 C temperature. The toilet system can easily be assembled and disassembled without special tools. Assembly instructions are included in the package. Plastic garbage bins of 35 litres with lids are included in the toilet package.



List of parts (Green Toilet 120 composting dry toilet unit): Container, Waste shaft, Wheels, Ventilation pipes, Toilet seat, Wind fan, Fixtures, Bag of dry material (peat, sawdust etc.), Liquid hose, Canister, Two Green Toilet spare containers for composting, Hanging bucket with a water dispenser for hand washing, Plastic garbage bin with a lid (35 l). Option: GeoTrap filter for seep liquid.

Pikkuvihreä Green Toilet 120 is a ResCamp Modules™ component

ResCamp Modules
Fostering Recovery

"From Stand-alone Ideas to Comprehensive Solutions"

Water Heater by Mavatech, 74 kg

MAVATECH
NBC DECONTAMINATION



Technical details

- HB 250 diesel heater
- Flow capacity max 70 l/min
- Water temperature 30–70 degrees C
- Fuel consumption 7,8 l/h
- Max pressure 8 bar
- Heating capacity 71 kW
- 230 V / 1–50Hz (110 V optional); 140 W ; 0,9 A
- Dimension (L x W x H mm) 620, 610, 950
- Weight 74 kg
- One heater is able to supply several showers and tap stations with hot water simultaneously

Mavatech Water Heater is a ResCamp Modules™ component

ResCamp  Modules
Fostering Recovery

“From Stand-alone Ideas to Comprehensive Solutions”

Cleamix disinfection and decontamination system by Intlog



Cleamix patented decontamination device uses hydrogen peroxide in a new innovative, safe and controlled way

- Wireless control with tablet
- Disinfects up to 280m³
- 1- 5 slave units can be connected to increase capacity

Fast & effective disinfection destroys viruses and bacteria in contaminated spaces like

- Hospital rooms
- Laboratories
- Tents
- Vehicles



IntLog Cleamix system is a ResCamp Modules™ component

ResCamp  Modules
Fostering Recovery

"From Stand-alone Ideas to Comprehensive Solutions"

Field Cooker 30 L, 45 kg by Teuvan



Ultra light, but very robust, portable field cooker

- **30 liter double walled cooking kettle**
- **Well proven heat transferring system.** The special liquid filled double walled cooking kettle ensures even heat distribution during cooking and prevents scorching of foods. The liquid is non-freezing and environmentally friendly and the whole heat transferring system is virtually maintenance free.
- **Made of stainless steel** so it is easy to keep clean and overall life cycle costs are minimal.
- **From Raw Foods, the FC30 produces up to 60 meals four times per day.**
- **Can also be converted into a frying pan or water heater** with optionally available equipment.
- **Mounted on a frame** that makes handling of the unit very easy and allows a very space efficient means of storing by stacking the units on top of each other.
- **Available equipped for LPG (gas) or Diesel** while both of the versions can also be run with solid fuel (wood).
- **Truly light and compact**, with mass of only approx. 45 kg (less than 100 pounds)
- **Dimensions:** L: 700 mm (28"), W: 600 mm (24"), H: 750 mm (30"), without diesel burner.

Teuvan Field Cooker 30 is a ResCamp Modules™ component



"From Stand-alone Ideas to Comprehensive Solutions"

Field Cooker 75 L, 83 kg by Teuvan



Light but very robust field cooker

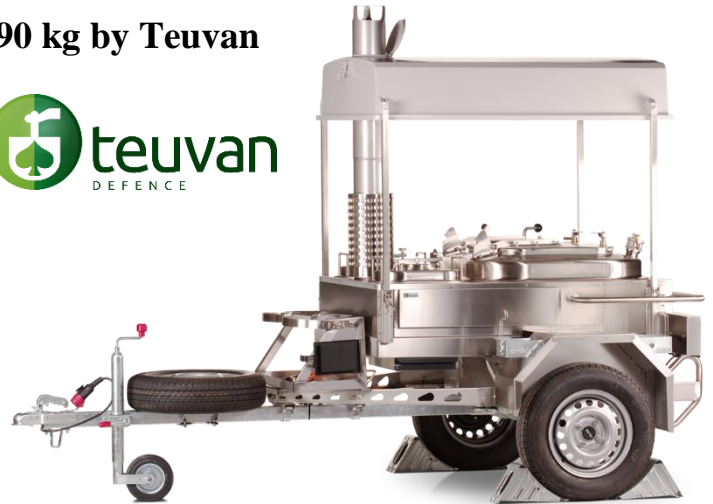
- **75 liter double walled cooking kettle**
- **Well proven heat transferring system.** The special liquid filled double walled cooking kettle ensures even heat distribution during cooking and prevents scorching of foods. The liquid is non-freezing and environmentally friendly and the whole heat transferring system is virtually maintenance free.
- **Made of stainless steel** so it is easy to keep clean and overall life cycle costs are minimal.
- **From raw foods, the FC75 produces up to 150 meals four times per day.**
- **Can also be converted into a frying pan or water heater** with optionally available equipment.
- **Mounted on a frame** with wheels and skids which makes handling of the unit very easy. The kettle can be tilted over for simplified cleaning.
- **Available equipped for LPG (gas) or diesel** while both of the versions can also be run with solid fuel (wood).
- **Diesel version** includes a compact oil burner and control panel with thermostat. Electricity requirement is 230V AC 50 Hz, 1A, 220 W. Fuel is supplied from a Jerry-can
- **Truly light and compact**, with mass of only approx. 83 kg (less than 183 lbs)
- **Dimensions:** L: 1200 mm (4 ft), W: 715 mm (2.3 ft), H: 950 mm (3.1 ft)
- **Originally designed for Finnish Defence Forces**, using it extensively since 1994..

Teuvan Field Cooker 75 is a ResCamp Modules™ component

ResCamp Modules
Fostering Recovery

"From Stand-alone Ideas to Comprehensive Solutions"

Ultra Light Field Kitchen LFK 150, 390 kg by Teuvan



Ultra light trailer mounted field kitchen.

A very cost effective approach to field feeding with ease of use and very favourable mobility characteristics as well as minimal requirement for storage space.

- **150l double walled cooking kettle and 2x 20l water heaters** as a standard.
- **The heat distribution system** in the double walled cooking kettle ensures good cooking results and prevents food from being burned.
- **Made of stainless steel** so it is easy to keep clean and overall life cycle costs are minimal.
- **From raw foods, the LFK 150 produces up to xxx meals four times per day.**
- **Available equipped for Diesel or LPG (gas)** while both of the versions can also be run with solid fuel (wood).
- **Diesel version** includes a compact oil burner and control panel with thermostat. Electricity requirement is 230V AC 50 Hz, 1A, 220W. Fuel supplied from a Jerry-can.
- **LFK trailer** tips out for easy cleaning. Folds to vertical for storage in a very small space.
- **Height adjustable tow bar** with interchangeable tow connectors to allow towing with a wide variety of vehicles.
- **The chassis** also an optional platform for diesel generator or other equipment.
- **Optional modular add-ons** allow easy customization. Available options include
 - Transport cover
 - Fold away work table
 - Equipment for diesel or LFO operation
 - Power generator
 - LPG-gas burner
 - Various tow connectors, spare tyre etc.
- **Weight** of the whole system is approx. from 390 up to 500 kg depending on the included equipment.

Teuvan Light Field Kitchen 150 is a ResCamp Modules™ component



"From Stand-alone Ideas to Comprehensive Solutions"